

What should you know before scuba diving in Galapagos Islands?

08H00: Start pick up from the hotels in Puerto Ayora, Santa Cruz Island.

DEPENDING ON THE DIVE SITE WE HAVE TWO DIFFERENT SCHEDULES:

09h30 / 10h30: Arrival at dive site. Dive and weight check (30 minutes) 10h30 /

11h30: First Dive (Depth 18-25mts/ 59-82ft. Max time 1 hour) 11h30 / 12h30:

Surface Interval (1.5 hour); Snack

12h45 / 13h45: Second Dive (depth 18-20mts / 59-65ft. Max Time 1 hour) 13h45 /

14h45: Lunch & return

15h15 / 16h30: Arrival to meeting point.

PLEASE NOTE

- The day before the tour all divers have to go to dive center office in order to prepare dive gear and sign the release of responsibility.
- **We need a minimum of 3 - 4 divers to confirm our daily dive tours (depending on the dive site).**

If the diver is on board a cruise ship and arrives in Santa Cruz on the day of the dive, he or she will need to meet us at 7:00 am to set up the equipment and sign the waiver. In case the diver is picked up directly from the cruise or cannot arrive with us for other reasons before heading to the dive sites, the diver must fill out the application form very clearly and carefully, especially the height part /weight and sizes, so we can send you the equipment. Although it is common practice to ship the equipment without prior adjustment and without major inconveniences, **the diver must know and understand that there is a margin of error in this way.**

INCLUDED

- 2 Dives
- Complete Dive Gear: 5- 7mm wetsuit, Regulator, BCD, mask, fins, boots, hood, textile gloves, weights and compressed air 12-liter dive tanks with yoke valve system.
- English/Spanish - speaking guides (2 guides for 12 divers)
- Transport to and from the dives sites, normally starting from our dive shop in Puerto Ayora, Santa Cruz Island.
- Snack & Lunch
- Towel service
- Limited civil liability insurance for boat accidents.
- Limited civil liability insurance for passenger and crew accidents.

EXCLUDED

- Travel insurance
- Dive insurance related to any pre-existing physical or mental health of the participant, declared or not. We strongly recommend buying dive insurance, annual or partial, from companies such as DAN, World Travel Nomads, Travel Guard/AGI, Aquamed, EFESSM Lafont, etc.
- DIN Adaptor (\$5 each)
- NITROX tanks. (\$15 each)
- Dive Computer (\$15 per day)
- Photographs and videos

REQUISITES

- It is mandatory to hold a diver's certification (PADI, NAUI, CMAS, etc).
- Complete the application form.
- Medical Certificate if declaring any medical condition and/or people over 60 years old that have not been diving during the last 8 months.
- Minimum age to participate 10 years (personal guide for children see special considerations)
- We accept certified beginner divers at all dive sites except Gordon Rocks for which we require a minimum of 25 logged dives and the last 18 months before the dive day or the previous dive evaluation of our dive guides, while diving at another site.
- We not accept participants accompanying family members or doing snorkeling activities; unless they pay the full rate.

CONDITIONS AND SPECIAL CONSIDERATIONS

For safety and satisfaction of all our divers, we strive to keep our dive groups together. This is often difficult as each group is made up of divers with different skill levels, experience and expectations.

Basic safety will not allow unaccompanied ascents or solo divers. Even though it is regulation procedure, divers would rather not sacrifice their precious underwater time for a stranger's personal conditions. We want to accommodate everyone who would like to dive safely in the Galápagos, so if you have any special limitation or requirement, please let us know as early as possible so we can provide arrangements that will not affect the safety or success of the whole dive group:

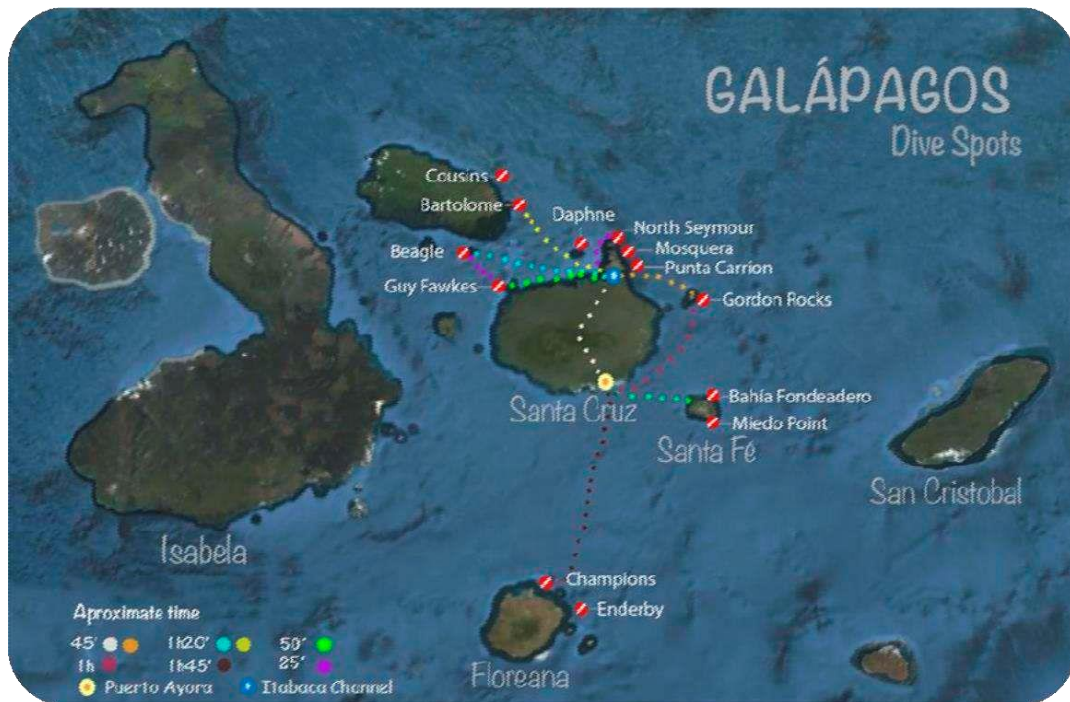
- If you have a difficulty or limitation which could impede your activity at a level similar to the other divers, you must contract an additional Divemaster to help at all times, both during transportation phases and during the dive.
- If you consume your air supply too fast, this can force the entire group to ascend together. Do inform us in the dive shop when making arrangements, so we can supply a 15-liter cylinder, or you can contract a Divemaster to assist you individually.
- If you have trouble with pressure equalization or other difficulty that could impede your descent for more than 8 minutes, so that you cannot descend with the guide and the rest of the group, you should contract a Divemaster to accompany you throughout the dive.
- If your principal objective is underwater photography and you do not want to move along with a group, or if your skill level and air consumption are such that you want to extend your dive to the maximum allowed 1 hour, **you must contract a personal Divemaster to accompany you throughout the dive.**
- If you have had episodic diarrhea, vomiting, or other causes for dehydration in the days before the scheduled dive, let us know, as this can increase the danger of decompression problems. Likewise, please inform us if you have ever had any decompression sickness.
- Underage divers: 10 to 11-year-old children even (junior) open water certified need a private guide (mandatory) because of the max. depth certified (12m/40feet, the group goes down to 18m/60feet). For 12 to 14-year-old certified children we still recommend booking a private guide (optionally). In case of not contracting a private guide for the 12 to 14-year-old child, an adult family member (diver) must accompany the child on the tour. **For the advanced diving spot GORDON ROCKS, special regulations may apply.**

OUR ITINERARY

DAYS	LANCHA GALAPAGO
MONDAY	FLOREANA (2 dives)
TUESDAY	GORDON (2 dives) ***
WEDNESDAY	NORTH MOSQUERA/ SEYMOUR CHANNEL
THURSDAY	BARTOLOME/COUSINS
FRIDAY	SOUTH MOSQUERA/ DAPHNE
SATURDAY	SEYMOUR NORTHEAST / SEYMOUR CHANNEL
SUNDAY	PLAZAS/ GORDON***

*** MINIMUM OF 25 LOGGED DIVES/ LAST 18 MONTHS BEFORE OR THE EVALUATIONS OF OUR GUIDES

IMPORTANT: The itinerary may change due to National Park dispositions or circumstances beyond our control!



DIVE SITES

BARTHOLOME

Location: Located east of Santiago Island, a small Island with the famous Bartholomew pinnacle, dive sites located at 1 hour and a half from Itabaca Channel (North side of Santa Cruz Island).

Site Conditions: Moderate currents. A platform is found at approximately 10 meters of depth where a variety of reef fishes reside. On the edge of this platform there are underwater cliffs which start at about 15 meters deep with good probabilities to observe pelagic species.

Activity: White tip reef shark, reef fishes, barracudas, turtles, sting rays, variety of invertebrates.

COUSINS

Location: North-east of Santiago island near Bartholomew Island. Dive sites located at 1 hour and a half from Itabaca Channel (North side of Santa Cruz Island).

Site Conditions: Normally there are no strong currents at this site; this is partly a reef dive, partly a wall dive where the endemic black coral is found.

Activity: Cleaning station, sea horses, barracudas, sea lions, Galapagos sharks, white tip reef shark, turtles, reef fishes, sting rays, eagle rays, variety of invertebrates. At surface interval penguins, can be observed.

DAPHNE

Location: North of Santa Cruz Island, an exposed rock, one dive site located 30 minutes from Itabaca Channel (North side of Santa Cruz Island).

Site Conditions: Normally there are no strong currents at this site, rocky and sandy bottom.

Activity: here we find a small cave (**this is NOT a cave dive**) where white tip ref. sharks rest, additionally there is a pinnacle where we find a diversity of rays, Galápagos shark, turtles, coral reef fishes, barracudas, black coral walls and variety of invertebrates.

FLOREANA

Location: South of Santa Cruz Island, 3 possible dive sites: Punta Cormorant, Champion and Enderby; it is 1 hour and a half away from our base.

Site Conditions: mean depth of 18 mtr. Normally this site does not present strong currents. This is a reef dive site where corals and sponges can be found.

Activity: Cleaning station, sea lions, Galapagos sharks, white tip reef shark, turtles, reef fishes, sting rays, eagle rays, barracudas, variety of invertebrates.

GORDON ROCKS

(Minimum experience to participate: 25 logged dives or the previous evaluation of our dive guides at another site)

Location: North of Santa Cruz Island, 2 dive sites located 30 minutes from Itabaca Channel (North side of Santa Cruz Island).

Site Conditions: This rock formation is a world-renowned site, for intermediate and advanced divers due to the strong currents and surge.

Activity: Hammerhead shark, cleaning station, Galapagos sharks, white tip reef shark, turtles, reef fishes, sting rays, eagle rays, Galapagos eel, barracudas, variety of invertebrates.

PUNTA CARRION

Location: Is the most prominent point at the north east of Santa Cruz, the dive site is an outer part of the east point of Santa Cruz is a cliff that drops to over 30mtr deep, with fallen stones for erosion reasons. The inside of the north side is a channel that divides Santa Cruz of Baltra Island this channel is between 12 and 14mtr deep, it is the most quiet and safe site for diving.

Site Conditions: depending on the wind, the east side can be a bit choppy and the currents can be mild to intermediate, is a good place to find thermoclines that has many nutrients.

Activity: White tip shark, sting rays and eagle rays and marbled, scorpion fish, turtles and sea lions; shoals of reef fish such as grunts and ojones.

MOSQUERA (NORTH)

Location: North of Santa Cruz Island between North Seymour Island and Baltra Island. This is an islet that emerges from the sea (sand bar), one dive site located 25 minutes from Itabaca Channel (North side of Santa Cruz Island).

Site Conditions: Normally there are no strong currents, sandy bottom between 10 meters with garden eels and pelagic species. North Mosquera presents a sandy rock area that connects with Seymour channel where must be found reef fishes and tintoreras rest.

Activity: Hammer head sharks, Galapagos shark, black tip reef shark, white tip reef shark, sea lions, turtles, barracudas, reef fishes, sting rays, eagle rays, Galapagos eel, variety of invertebrates.

MOSQUERA (SOUTH)

Location: North of Santa Cruz Island between north Seymour Island and Baltra Island, this is an islet that emerges from the sea (sand bar), one dive site located 25 minutes from Itabaca Channel (North side of Santa Cruz Island).

Site Conditions: There are not strong currents; a big reef of 5 meters with an inclination ravine of 18mtr with black coral and mollusks invertebrates; there is also a submarine canyon from 18 meters with pelagic species.

Activity: Hammer head sharks, black tip reef shark, white tip reef shark, sea lions, turtles, barracudas, reef fishes, sting rays, eagle rays, Galapagos eel, variety of invertebrates.

PLAZAS

Location: Off east coast of Santa Cruz

Site Conditions: Currently, visitors are forbidden to go ashore on North Plaza, but diving off the backside of North Plaza is a nice, easy and relaxing dive, with relatively little current or surge. The dive usually begins along the center of the north shore, where a boulder slope with a gradual incline falls to a sand bottom at about 24m (80 ft.) white-tipped reef sharks, marble and diamond rays, and waving fields of Galapagos garden eels are found in sandy patches throughout this boulder slope.

Activity: Most of the action takes place in the first 14 m (45 ft). There are huge schools of yellowtail surgeonfish yellow tailed mullets and lots of parrotfish in the shallows. You are more likely to see pelagic, including hammerheads and Galapagos sharks, at the eastern end of the islet. This eastern point can be very good, especially in the warm season (January- May in particular) because cross-currents can bring in manta rays, and even snorkelers can enjoy a lengthy swim with these marvelous creatures. Solitary whale sharks occasionally visit in the hot season whether snorkeling or diving, sea lions become constant "buddies".

SANTA FÉ

Location: South east of Santa Cruz, there are 2 dive sites located 1 hour by boat from our base.

Site conditions: It is clear and with calm currents generally, ideal for beginners although the topography and fauna can be interesting for intermediate divers.

Activity: Cleaning station, reef fish, stingrays, eagle rays, turtles, eels, sea lions, white tip sharks and variety of invertebrates.

SEYMOUR (CHANNEL)

Location: North of Santa Cruz Island, 2 dive sites located 25 minutes from Itabaca Channel (North side of Santa Cruz Island).

Site Conditions: For all levels of divers, although sometimes there can be strong currents, platform reefs with a diversity of fish species, has sandy bottom with 10 meters reef where there is a lot of tintoreras sharks and fish cleaning station

Activity: Cleaning station, sea lions, Galapagos sharks, white/ black tip reef shark, hammerhead shark, turtles, reef fishes, sting rays, eagle rays, Galapagos eel, barracudas, variety of invertebrates.

SEYMOUR (POINT)

Location: North of Santa Cruz Island, located 30 minutes from Itabaca Channel (North side of Santa Cruz Island).

Site Conditions: It is a point a little more difficulty in relation to Channel Seymour. Rocky bottom with small caves at 12mtr where you can find turtles or sharks resting stripes; can occur currents a little strong, diving is mixed this means that the dive is in the coast and then goes to the blue to look pelagic animals, at the end of the diving there are a platform where are shark splaying with the flow and cleaning station.

Activity: Cleaning station, sea lions, Galapagos sharks, white tip reef shark, hammerhead shark, turtles, reef fishes, sting rays, eagle rays, Galapagos eel, barracudas, variety of invertebrates.

OUR DIVE BOAT



L/P El Galapago I

- Fiber Glass boat; 10 meters long by 3 meters' wide
- 2 YAMAHA motors, 200HP
- Security Equipment: Radio HF, Epirb, GPS, O2
- Capacity: 10 PASSENGERS, 2 GUIDES, 1 CAPTAIN, 1 MARINER
- Toilet on board.

Note: You cannot take flights on the same day of the dive, it is recommended to arrive the next day for health reasons.

***The tour is subject to change in case weather condition is not allowed or by Galapagos National Park Regulations, whit out prior notice.